

Full Overlay	Overlay	Alder	Cherry	Hickory	HDF	Maple	Oak	QSWO	Walnut	Center Panel	Slit & Rail	Drawer Front
	FO Albany	FO	6	6			6				Solid Raised	3 3/8
FO Bridgeport	FO	4	4			4				1/4" Veneer	3 3/8	1 pc
FO Bridgeport Plus	FO	6	6			6				1/2" Solid Flat	3 3/8	1 pc
FO Cascade	FO	3	3	3		3	2	7		Solid Slab		1 pc
FO Classic	FO	2	2			2				1/4" Veneer	2	5 pc
FO Classic Plus	FO	4	4			4				1/2" Solid Flat	2	5 pc
FO Concord	FO	3	3			3	3			1/4" Veneer	3	1 pc
FO Concord Plus	FO	5	5			5	5			5/8" Solid Flat	3	1 pc
FO Copeland	FO	2	2			2	2			1/4" Veneer	2 3/8	1 pc
FO Copeland Plus	FO	4	4			4	4			5/8" Solid Flat	2 3/8	1 pc
FO Creekside	FO	4	4			4				1/2" Solid Flat	2 3/8	1 pc
FO Delay	FO	3	3			3				1/4" Veneer	2 3/4	1 pc
FO Delay Plus	FO	5	5			5				1/2" Solid Flat	2 3/4	1 pc
FO Easton	FO	3	3	3		3		5		1/4" Veneer	3	1 pc
FO Easton Plus	FO	5	5	5		5		7	7	1/2" Solid Flat	3	1 pc
FO Fulton	FO	4	4	4		4	4			1/4" Veneer	2 7/5	1 pc
FO Fulton Plus	FO	6	6	6		6	6			1/2" Solid Flat	2 3/4	1 pc
FO Galveston	FO	5	5	5		5	4		7	Solid Raised	2 3/4	1 pc
FO Hampton	FO	5	5	5		5	4			Solid Raised	3 3/8	1 pc
FO Heritage	FO	5	5			5				Solid Raised	2	5 pc
FO Hill	FO	2	2	2		2	2	4		1/4" Veneer	2 3/8	1 pc
FO Hill Plus	FO	4	4	4		4	3	6	7	1/2" Solid Flat	2 3/8	1 pc
FO Hill II	FO	3	3			3				1/4" Veneer	2 3/8	1 pc
FO Hill II Plus	FO	5	5			5	4			1/2" Solid Flat	2 3/8	1 pc
FO Inglewood	FO	2	2			2				1/4" Veneer	2 3/8	1 pc
FO Inglewood Plus	FO	4	4			4				1/2" Solid Flat	2 3/8	1 pc
FO Kensington	FO	5	5			5				Solid Raised	3	1 pc
FO Liberty	FO	4	4			4				1/4" Veneer	3	5 pc
FO Liberty Plus	FO	6	6			6				1/2" Solid Flat	3	5 pc
FO Mayfield	FO	4	4	4		4	3			Solid Raised	2 3/8	1 pc
FO Metro HDF	FO				2					HDF Slab		1 pc
FO Mission	FO	3	3	3		3	3	5		1/4" Veneer	3	1 pc
FO Mission Plus	FO	5	5	5		5	4	7	7	1/2" Solid Flat	3	1 pc
FO Newport	FO	3	3	3		3	2			1/4" Veneer	3 3/8	1 pc
FO Newport Plus	FO	5	5	5		5	4			1/2" Solid Flat	3 3/8	1 pc
FO Pinnacle	FO	2	2	2		2	2			1/4" Veneer	2 3/8	1 pc
FO Pinnacle Plus	FO	4	4	4		4	3			1/2" Solid Flat	2 3/8	1 pc
FO Plusline	FO	6	6			6	5	7+5%	7+5%	1/2" Solid Flat	1 1/4	1 pc
FO Portland	FO	3	3	3		3	2			1/4" Veneer	3 3/8	1 pc
FO Portland Plus	FO	5	5	5		5	4			1/2" Solid Flat	3 3/8	1 pc
FO Prescott	FO	5	5			5				Solid Raised	3 3/8	1 pc
FO Princeton	FO	6	6			6				Solid Raised	3	5 pc
FO Reflection	FO				3					1/4" HDF	3	1 pc
FO Serenity SL	FO				4					1/2" HDF	2 3/8	1 pc
FO Slimline SL	FO				4					5/8" HDF	5/8	1 pc
FO Solitude	FO				3					1/4" HDF	3	1 pc
FO Spirit SL	FO				4					1/2" HDF	3	1 pc
FO Summit	FO	2	2			2	2			1/4" Veneer	2 3/8	1 pc
FO Summit Plus	FO	4	4			4	3			1/2" Solid Flat	2 3/8	1 pc
FO Taylor	FO	3	3			3				1/4" Veneer	3	1 pc
FO Taylor Plus	FO	5	5			5		7		1/2" Solid Flat	3	1 pc
FO Trinity	FO				2					1/4" HDF	2 3/8	1 pc
FO Waterford	FO	4	4	4		4		7		Solid Raised	2 3/4	1 pc
FO Windsor	FO	4	4	4		4	3			Solid Raised	2 3/8	1 pc
FO Windsor Arch	FO	4	4	4		4	3			Solid Raised	2 3/8	1 pc
FO Winfield	FO	3	3			3				1/4" Veneer	3	5 pc
FO Winfield Plus	FO	5	5			5				1/2" Solid Flat	3	5 pc
FO WoodLine	FO	4				4	3	6	6	1/4" Veneer	1	1 pc
FO Wyndam	FO	6	6			6				Solid Raised	3	5 pc

Inset	Overlay	Alder	Cherry	Hickory	HDF	Maple	Oak	QSWO	Walnut	Center Panel	Slit & Rail	Drawer Front
	IN Classic*	IN	6	6			6				1/4" Veneer	2
IN Classic Plus*	IN	7	7			7				1/2" Solid Flat	2	5 pc
IN Creekside	IN	7	7			7				1/2" Solid Flat	2 3/8	1 pc
IN Easton	IN	6	6			6		7+5%		1/4" Veneer	3	1 pc
IN Easton Plus	IN	7	7			7		7+15%		1/2" Solid Flat	3	1 pc
IN Fulton*	IN	6	6			6				1/4" Veneer	2 3/4	1 pc
IN Fulton Plus*	IN	7	7			7				1/2" Solid Flat	2 3/4	1 pc
IN Galveston	IN	7	7			7		7+20%		Solid Raised	2 3/8	1 pc
IN Heritage	IN	7	7			7				Solid Raised	2	5 pc
IN Hill	IN	6	6			6	5	7		1/4" Veneer	2 3/8	1 pc
IN Hill Plus	IN	7	7			7	7	7+10%		1/2" Solid Flat	2 3/8	1 pc
IN Inglewood	IN	6	6			6				Solid Raised	2 3/8	1 pc
IN Inglewood Plus	IN	7	7			7				1/2" Solid Flat	2 3/8	1 pc
IN Serenity SL	IN				7					1/2" HDF	2 3/8	1 pc
IN Slimline SL	IN				7					5/8" HDF	5/8	1 pc
IN Summit	IN	6	6			6	5			1/4" Veneer	2 3/8	1 pc
IN Summit Plus	IN	7	7			7	7	7+20%		1/2" Solid Flat	2 3/8	1 pc
IN Taylor	IN	6	6			6				1/4" Veneer	3	1 pc
IN Taylor Plus	IN	7	7			7		7+20%		1/2" Solid Flat	3	1 pc
IN Trinity	IN				6					1/4" HDF	2 3/8	1 pc
IN WoodLine	IN	7				7	6	7+10%	7+15%	1/4" Veneer	1	1 pc

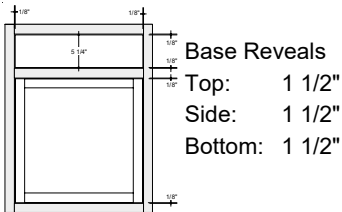
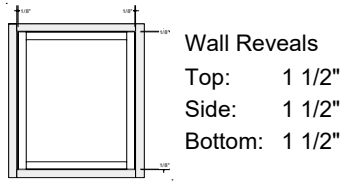
- All inset door styles are available with non-beaded face frame (+0%)
 - Select door styles available with beaded face frame (+10%); Beaded face frame only available in Cherry, Maple, and Walnut
 * NOT Available with beaded face frame

Standard Overlay	Overlay	Alder	Cherry	Hickory	Maple	Oak	Walnut	Center Panel	Slit & Rail	Drawer Front
	SO Cascade	SO	2	2	2	2	1	6	Solid Slab	
SO Classic	SO	1	1		1			1/4" Veneer	2	5 pc
SO Classic Plus	SO	3	3		3			1/2" Solid Flat	2	5 pc
SO Concord	SO	2	2		2	2		1/4" Veneer	3	1 pc
SO Concord Plus	SO	4	4		4	4		5/8" Solid Flat	3	1 pc
SO Copeland	SO	1	1		1	1		1/4" Veneer	2 3/8	1 pc
SO Copeland Plus	SO	3	3		3	3		5/8" Solid Flat	2 3/8	1 pc
SO Creekside	SO	3	3		3			1/2" Solid Flat	2 3/8	1 pc
SO Delay	SO	2	2		2			1/4" Veneer	2 3/4	1 pc
SO Delay Plus	SO	4	4		4			1/2" Solid Flat	2 3/4	1 pc
SO Easton	SO	2	2	2	2			1/4" Veneer	3	1 pc
SO Easton Plus	SO	4	4	4	4	7		1/2" Solid Flat	3	1 pc
SO Fulton	SO	3	3	3	3			1/4" Veneer	2 3/4	1 pc
SO Fulton Plus	SO	5	5	5	5	5		1/2" Solid Flat	2 3/4	1 pc
SO Galveston	SO	4	4	4	4	3	7	Solid Raised	2 3/4	1 pc
SO Hampton	SO	4	4	4	4	3		Solid Raised	3 3/8	1 pc
SO Hill	SO	1	1	1	1	1		1/4" Veneer	2 3/8	1 pc
SO Hill Plus	SO	3	3	3	3	2		1/2" Solid Flat	2 3/8	1 pc
SO Inglewood	SO	1	1		1			1/4" Veneer	2 3/8	1 pc
SO Inglewood Plus	SO	3	3		3			1/2" Solid Flat	2 3/8	1 pc
SO Kensington	SO	4	4		4			Solid Raised	3	1 pc
SO Mayfield	SO	3	3	3	3	2		Solid Raised	2 3/8	1 pc
SO Mission	SO	2	2	2	2	2		1/4" Veneer	3	1 pc
SO Mission Plus	SO	4	4	4	4	3	7	1/2" Solid Flat	3	1 pc
SO Newport	SO	2	2	2	2	2		1/4" Veneer	3 3/8	1 pc
SO Newport Plus	SO	4	4	4	4	3		1/2" Solid Flat	3 3/8	1 pc
SO Pinnacle	SO	1	1	1	1	1		1/4" Veneer	2 3/8	1 pc
SO Pinnacle Plus	SO	3	3	3	3	2		1/2" Solid Flat	2 3/8	1 pc
SO Portland	SO	2	2	2	2	2		1/4" Veneer	3 3/8	1 pc
SO Portland Plus	SO	4	4	4	4	3		1/2" Solid Flat	3 3/8	1 pc
SO Prescott	SO	4	4		4			Solid Raised	3 3/8	1 pc
SO Summit	SO	1	1		1			1/4" Veneer	2 3/8	1 pc
SO Summit Plus	SO	3	3		3	2		1/2" Solid Flat	2 3/8	1 pc
SO Taylor	SO	2	2		2			1/4" Veneer	3	1 pc
SO Taylor Plus	SO	4	4		4	7		1/2" Solid Flat	3	1 pc
SO Waterford	SO	3	3	3	3	7		Solid Raised	2 3/4	1 pc
SO Windsor	SO	2	2	2	2	1		Solid Raised	2 3/8	1 pc
SO Windsor Arch	SO	2	2	2	2	2		Solid Raised	2 3/8	1 pc

Rustic	Overlay	Alder	Cherry	Hickory	Maple	Oak	Walnut	Center Panel	Slit & Rail	Drawer Front
	Rustic FO Albany	FO	6	6					Solid Raised	3 3/8
Rustic FO Bridgeport Plus	FO	6	6					1/2" Solid Flat	3 3/8	1 pc

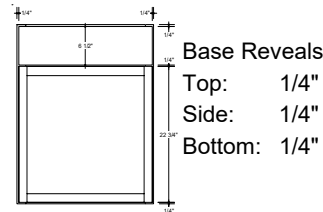
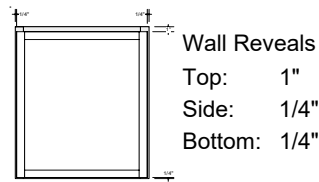
INSET

Non-Beaded +0% ~ Beaded +10%



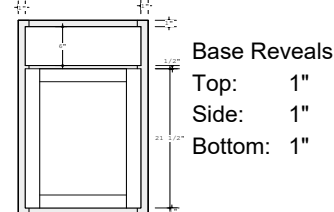
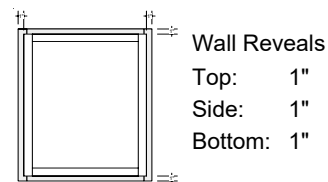
Concealed with Integrated Soft Close

FULL OVERLAY



Concealed with Integrated Soft Close

STANDARD OVERLAY



Concealed with Integrated Soft Close

STAIN

- +0% Spray / Hand-Wipe Stain
- +10% Multi-Step Stain
Charcoal, Dune, Espresso, Heather, Pewter, Sable & Weathered

GLAZE

- +8% Accent Glaze
- +12% Flood Glaze
- +18% Feather Glaze

SPECIALTY

- +25% Reclaimed Patina
- +30% Reclaimed Patina Color Program
Limited to select doors and woods
- +5% Non-Standard

OPAQUE ENAMEL

- +12% Standard Opaque
- +12% Custom Opaque - \$1100 sample, \$2600 setup

DISTRESSING

- +10% Timeworn
- +10% Antique
- +15% Heirloom

CONSTRUCTION OPTIONS

- \$120 MPLD - 5/8" Wood Dovetail
- \$250 WALD - 5/8" Walnut Dovetail
- 8% PLYBOX - 1/2" Ply Box Construction,
E-Board Shelves
- 12% ALLPLYSLF - 1/2" Ply Box Construction,
Ply Shelves

FINISHED ENDS

- \$104 FEW - 1/2" Ply Wall
- \$216 FEB - 1/2" Ply Base/Vanity
- \$540 FET - 1/2" Ply Tall
- \$162 NFLEW - 3/4" Ply Wall
- \$324 NFLEB - 3/4" Ply Base/Vanity
- \$784 NFLET - 3/4" Ply Tall

COMMON MODIFICATIONS

- N/C Reduce Depth
- \$200 Increase Depth - Wall 0-3"
- \$320 Increase Depth - Wall 3.25-24"
- \$590 Increase Depth - Base/Vanity
- \$740 Increase Depth - Tall
- \$400 Reduce Width and/or Height
- 30% VFI
- 40% WALVFI
- \$100 GPREP - Prep for Glass
- 20% Omit Doors
- 5% Butt Doors
- \$164 Full Depth Shelf
- 15% Stack
- 15% Combine
- 25% Face Frame Modification
- \$294 Flush Toe Kick
- \$190 Loose Toe Kick
- \$170 No Toe Kick
- \$330 Inset Toe Kick

DRAWER FRONT

- \$144 FIVEPIECEDF - 5 Pc. Drawer Front
- \$250 COMBODF - 1 Pc./5 Pc. Combo DF

EXTENDED STILE

- \$184 WES - 0-3" Wall
- \$184 BES - 0-3" Base
- \$184 VES - 0-3" Vanity
- \$294 TES - 0-3" Tall
- \$224 WES6 - 3 1/8-6" Wall
- \$224 BES6 - 3 1/8-6" Base
- \$224 VES6 - 3 1/8-6" Vanity
- \$348 TES6 - 3 1/8-6" Tall

See Custom Options section for details and additional custom modifications

General Specifications (Inset - see additional specifications on SP-17)

- 1 **Interior**
 - Natural maple EasyClean interior
- 2 **Top & Floor**
 - 1/2" E-Board with a natural maple EasyClean surface
- 3 **Face Frame**
 - Face frame is 3/4" solid wood
 - 3" Wide center stile standard on 30- 48" Wide cabinets except when butt doors (BD)
 - Butt door cabinets 24-36" Wide have no center stile; See Custom Options for Butt Door Cabinets 39" Wide and up
- 4 **Side**
 - 1/2" E-Board with natural maple EasyClean surface; 1/4" scribe
 - Edge banded top and bottom edges (Wall cabinets only)
 - Sides do not match cabinet face. Specify finished ends for all exposed ends. See Custom Options for the following: Finished Veneer End, Near Flush Finished Veneer End, True Flush Finished End (Opaque Only), Iron Works Gable End Panel, Door End Kit, Integrated Panel End, Working Door End, and Non-Working Door End (Inset Only)
 - See Custom Options for plywood cabinet box upgrades
- 5 **Back**
 - 1/4" Dura-board with natural maple EasyClean surface
- 6 **Hanger Rail**
 - 1/2" E-Board
- 7 **I-Beam**
 - 1/2" I-Beam stabilizer; base and vanity cabinets
- 8 **Shelves**
 - 3/4" E-Board with natural maple EasyClean surface and 1mm PVC shelf banding on front edge
 - Adjustable 1 1/4" on center
 - Standard wall cabinets have full depth shelves
 - Standard base and vanity cabinets have one half depth shelf and are drilled for both half and full depth shelves
 - See Custom Options for Full Depth Shelf
 - For Plywood Shelves see Custom Options for All Plywood Box Option
- 9 **Hinges**
 - Standard & Full Overlay: Blum six-way adjustable cup hinge with integrated soft close; hinge opens 110°
 - Soft close hinges not available on square corner wall or base cabinets
- 10 **Drawer Box & Glides**
 - **BVD** - 5/8" Birch Veneer Dovetail Drawer Box with Blum Full Extension Under Mount Glides with Soft Close
 - See Custom Options for the following:
 - **MPLD** – 5/8" Solid Wood Dovetail Drawer Box with Blum Full Extension Under Mount Glides with Soft Close and Side to Side Adjustability
 - **WALD** – 5/8" Solid Walnut Dovetail Drawer Box with Blum Full Extension Under Mount Glides with Soft Close and Side to Side Adjustability
- 11 **Roll Out Tray**
 - **BVD** – 5/8" Birch Veneer Dovetail Roll Out Tray with Full Extension Under Mount Glides with Soft Close; mounted to adjustable solid wood upright posts
 - See Custom Options for the following:
 - **MPLD** – 5/8" Solid Wood Dovetail Roll Out Tray with Full Extension Under Mount Glides with Soft Close; mounted to adjustable solid wood upright posts
 - **WALD** – 5/8" Solid Walnut Dovetail Roll Out Tray with Full Extension Under Mount Glides with Soft Close; mounted to adjustable solid wood upright posts
- 12 **Toe Kick**
 - Recessed toe is 1/2" E-Board
 - Rough toe kick size: 3 1/2" D x 4 1/2" H
 - Matching plywood toe kick material is required
- 13 **SO# Label**
 - Located behind hinge plate and center of face frame. **SO# is required on all calls to Customer Service and on all warranty orders**

E-Board

Engineered board constructed of wood fibers bonded together with exclusive bonding agents, which are similar to the resins used in quartz countertops.

Our E-Board is engineered to tighter tolerances for better water resistance and greater stability than most plywood products on the market.

Additional Notes

- Maximum door size: 26" W x 67" H
 - Except for SL series (Serenity, Slimline & Spirit); Max door size: 24" W x 67" H
- Single door cabinets will be hinged left unless specified on order
- Standard Depths & Heights (*unless stated otherwise*)
 - Wall: 12" Deep
 - Base: 24" Deep / 34 1/2" High
 - Tall: 12" or 24" Deep
 - Vanity: 18" or 21" Deep / 34 1/2" High
- Tall: Fixed floor between upper and lower sections is 1/2" E-Board with natural maple EasyClean surface.

Woodland reserves the right to substitute or change specs without notice due to availability and supplier constraints.

Inset General Specifications



Look for INSET symbol to indicate availability.

Inset cabinetry has some special characteristics and unique specifications that are different than full or standard overlay cabinetry. It is important to take note of these differences and educate your customer, especially if they live in a region with broad variations in temperature and humidity levels.

Inset cabinetry requires both careful installation and controlled environments. Racking occurs when cabinets are forced out of square by improper installation. To prevent racking, installers must compensate for out of square floors and walls with shims so inset cabinetry will function correctly. We recommend using only experienced installers to install inset cabinetry jobs.

Face Frame

- Non-beaded face frame with slightly eased inside edge (+0%)
- Beaded face frame available on select door styles (+10%)
- 1/8" tolerance around doors and drawers
NOTE: Changes in humidity and temperature can cause this tolerance to change. This is normal and should be expected.

Hinges

- Magnetic catch on all doors
 - Standard with concealed hinge (six-way adjustable cup hinge with integrated soft close and quick release feature; hinge opens 110°)
 - Soft close hinges not available on square corner wall or base cabinets

Drawer Box & Glides

- **BVD** – 5/8" Birch Veneer Dovetail Drawer Box with Blum Full Extension Under Mount Glides with Soft Close and Side to Side Adjustability* (free upgrade)
- See Custom Options for the following:
 - **MPLD** – 5/8" Solid Wood Dovetail Drawer Box with Blum Full Extension Under Mount Glides with Soft Close and Side to Side Adjustability*
 - **WALD** – 5/8" Solid Walnut Dovetail Drawer Box with Blum Full Extension Under Mount Glides with Soft Close and Side to Side Adjustability*

*Drawer front depth adjustment brackets included. Drawers in cabinets 9-12" Wide do not have side to side adjustment

Roll Out Tray

- **BVD** – 5/8" Birch Veneer Dovetail Roll Out Tray with Full Extension Under Mount Glides with Soft Close; mounted to adjustable solid wood upright posts
- See Custom Options for the following:

Inset cabinetry does not react well to extreme changes in climate. Wood products will naturally expand and contract with changes in climate, which in turn can cause a cabinet's dimensions to change. This is the nature of wood products and cannot be avoided. It is imperative that inset cabinetry be stored and installed in locations where both temperature and humidity are controlled. If a customer lives in an area with extreme variations in interior temperatures and humidity, we do not recommend they select inset cabinetry.

- ✓ **REQUIRED FORMS:** Inset Product Awareness Agreement must be completed and submitted with order

- **MPLD** – 5/8" Solid Wood Dovetail Roll Out Tray with Full Extension Under Mount Glides with Soft Close; mounted to adjustable solid wood upright posts
- **WALD** – 5/8" Solid Walnut Dovetail Roll Out Tray with Full Extension Under Mount Glides with Soft Close; mounted to adjustable solid wood upright posts

Additional Notes

- Automatically increased to 13" Deep:
 - Wall cabinets
 - Diagonal Wall cabinets
 - 12" increases to 13", opening is 12 1/16" Wide
 - 15" increase to 16", opening is 12 1/16" Wide
 - **Desktop Bookcase cabinets**
 - Wall End Panels with Filler Front
- Must specify and charge to increase depth:
 - 12" Deep Base cabinets
 - 12" Deep Tall cabinets
 - **12" Deep Tall Bookcase cabinets**
- Minimum depth on cabinets with drawers or roll out trays: 18" Deep (*unless otherwise stated*)
- Vanity cabinets available in Adult Height only
- Standard mid-rail between upper and lower sections is 2"; exceptions include some appliance cabinets, Wall Garage Door, Wall Wine Hutch, and some furniture cabinets
- Three Door and Four Door Wall cabinets, and combined cabinets have a 2" stile between right and left sections. Most base and vanity cabinets 39" Wide and up have a 3" center stile; one exception is Drawer Base cabinets 39-48" Wide have a 2" stile
- Distressing – inset face frame will feature select distressing techniques; see Distressing section for more details

Woodland reserves the right to substitute or change specs without notice due to availability and supplier constraints.

Door Style Summary

Full Overlay	Overlay	Alder	Cherry	Hickory	HDF	Maple	Oak	QS White Oak	Walnut	Center Panel	Stile & Rail	Drawer Front
FO Albany	FO	6	6			6				Solid Raised	3 3/8	1 pc
FO Bridgeport	FO	4	4			4				1/4" Veneer	3 3/8	1 pc
FO Bridgeport Plus	FO	6	6			6				1/2" Solid Flat	3 3/8	1 pc
FO Cascade	FO	3	3	3		3	2	7	7	Solid Slab		1 pc
FO Classic	FO	2	2			2				1/4" Veneer	2	5 pc
FO Classic Plus	FO	4	4			4				1/2" Solid Flat	2	5 pc
FO Concord	FO	3	3			3	3			1/4" Veneer	3	1 pc
FO Concord Plus	FO	5	5			5	5			5/8" Solid Flat	3	1 pc
FO Copeland	FO	2	2			2	2			1/4" Veneer	2 3/8	1 pc
FO Copeland Plus	FO	4	4			4	4			5/8" Solid Flat	2 3/8	1 pc
FO Creekside	FO	4	4			4				1/2" Solid Flat	2 3/8	1 pc
FO Delray	FO	3	3			3				1/4" Veneer	2 3/4	1 pc
FO Delray Plus	FO	5	5			5				1/2" Solid Flat	2 3/4	1 pc
FO Easton	FO	3	3	3		3		5		1/4" Veneer	3	1 pc
FO Easton Plus	FO	5	5	5		5		7	7	1/2" Solid Flat	3	1 pc
FO Fulton	FO	4	4	4		4	4			1/4" Veneer	2 3/4	1 pc
FO Fulton Plus	FO	6	6	6		6	6			1/2" Solid Flat	2 3/4	1 pc
FO Galveston	FO	5	5	5		5	4		7	Solid Raised	2 3/4	1 pc
FO Hampton	FO	5	5	5		5	4			Solid Raised	3 3/8	1 pc
FO Heritage	FO	5	5			5				Solid Raised	2	5 pc
FO Hill	FO	2	2	2		2	2	4		1/4" Veneer	2 3/8	1 pc
FO Hill Plus	FO	4	4	4		4	3	6	7	1/2" Solid Flat	2 3/8	1 pc
FO Hill II	FO	3		3			2			1/4" Veneer	2 3/8	1 pc
FO Hill II Plus	FO	5		5			4			1/2" Solid Flat	2 3/8	1 pc
FO Inglewood	FO	2	2			2				1/4" Veneer	2 3/8	1 pc
FO Inglewood Plus	FO	4	4			4				1/2" Solid Flat	2 3/8	1 pc
FO Kensington	FO	5	5			5				Solid Raised	3	1 pc
FO Liberty	FO	4	4			4				1/4" Veneer	3	5 pc
FO Liberty Plus	FO	6	6			6				1/2" Solid Flat	3	5 pc
FO Mayfield	FO	4	4	4		4	3			Solid Raised	2 3/8	1 pc
FO Metro HDF	FO				2					HDF Slab		1 pc
FO Mission	FO	3	3	3		3	3	5		1/4" Veneer	3	1 pc
FO Mission Plus	FO	5	5	5		5	4	7	7	1/2" Solid Flat	3	1 pc
FO Newport	FO	3	3	3		3	2			1/4" Veneer	3 3/8	1 pc
FO Newport Plus	FO	5	5	5		5	4			1/2" Solid Flat	3 3/8	1 pc
FO Pinnacle	FO	2	2	2		2	2			1/4" Veneer	2 3/8	1 pc
FO Pinnacle Plus	FO	4	4	4		4	3			1/2" Solid Flat	2 3/8	1 pc
FO PlusLine	FO	6				6	5	7+5%	7+5%	1/2" Solid Flat	1 1/4	1 pc
FO Portland	FO	3	3	3		3	2			1/4" Veneer	3 3/8	1 pc
FO Portland Plus	FO	5	5	5		5	4			1/2" Solid Flat	3 3/8	1 pc
FO Prescott	FO	5	5			5				Solid Raised	3 3/8	1 pc
FO Princeton	FO	6	6			6				Solid Raised	3	5 pc
FO Reflection	FO				3					1/4" HDF	3	1 pc
FO Serenity SL	FO				4					1/2" HDF	2 3/8	1 pc
FO Slimline SL	FO				4					5/8" HDF	5/8	1 pc
FO Solitude	FO				3					1/4" HDF	3	1 pc
FO Spirit SL	FO				4					1/2" HDF	3	1 pc
FO Summit	FO	2	2			2	2			1/4" Veneer	2 3/8	1 pc
FO Summit Plus	FO	4	4			4	3			1/2" Solid Flat	2 3/8	1 pc
FO Taylor	FO	3	3			3				1/4" Veneer	3	1 pc
FO Taylor Plus	FO	5	5			5			7	1/2" Solid Flat	3	1 pc
FO Trinity	FO				2					1/4" HDF	2 3/8	1 pc
FO Waterford	FO	4	4	4		4			7	Solid Raised	2 3/4	1 pc
FO Windsor	FO	4	4	4		4	3			Solid Raised	2 3/8	1 pc
FO Windsor Arch	FO	4	4	4		4	3			Solid Raised	2 3/8	
FO Winfield	FO	3	3			3				1/4" Veneer	3	5 pc
FO Winfield Plus	FO	5	5			5				1/2" Solid Flat	3	5 pc
FO WoodLine	FO	4				4	3	6	6	1/4" Veneer	1	1 pc
FO Wyndam	FO	6	6			6				Solid Raised	3	5 pc

Door Style Summary

Standard Overlay	Overlay	Alder	Cherry	Hickory	Maple	Oak	QS White Oak	Walnut	Center Panel	Stile & Rail	Drawer Front
SO Cascade	SO	2	2	2	2	1		6	Solid Slab		1 pc
SO Classic	SO	1	1		1				1/4" Veneer	2	5 pc
SO Classic Plus	SO	3	3		3				1/2" Solid Flat	2	5 pc
SO Concord	SO	2	2		2	2			1/4" Veneer	3	1 pc
SO Concord Plus	SO	4	4		4	4			5/8" Solid Flat	3	1 pc
SO Copeland	SO	1	1		1	1			1/4" Veneer	2 3/8	1 pc
SO Copeland Plus	SO	3	3		3	3			5/8" Solid Flat	2 3/8	1 pc
SO Creekside	SO	3	3		3				1/2" Solid Flat	2 3/8	1 pc
SO Delray	SO	2	2		2				1/4" Veneer	2 3/4	1 pc
SO Delray Plus	SO	4	4		4				1/2" Solid Flat	2 3/4	1 pc
SO Easton	SO	2	2	2	2				1/4" Veneer	3	1 pc
SO Easton Plus	SO	4	4	4	4			7	1/2" Solid Flat	3	1 pc
SO Fulton	SO	3	3	3	3	3			1/4" Veneer	2 3/4	1 pc
SO Fulton Plus	SO	5	5	5	5	5			1/2" Solid Flat	2 3/4	1 pc
SO Galveston	SO	4	4	4	4	3		7	Solid Raised	2 3/4	1 pc
SO Hampton	SO	4	4	4	4	3			Solid Raised	3 3/8	1 pc
SO Hill	SO	1	1	1	1	1			1/4" Veneer	2 3/8	1 pc
SO Hill Plus	SO	3	3	3	3	2			1/2" Solid Flat	2 3/8	1 pc
SO Inglewood	SO	1	1		1				1/4" Veneer	2 3/8	1 pc
SO Inglewood Plus	SO	3	3		3				1/2" Solid Flat	2 3/8	1 pc
SO Kensington	SO	4	4		4				Solid Raised	3	1 pc
SO Mayfield	SO	3	3	3	3	2			Solid Raised	2 3/8	1 pc
SO Mission	SO	2	2	2	2	2			1/4" Veneer	3	1 pc
SO Mission Plus	SO	4	4	4	4	3		7	1/2" Solid Flat	3	1 pc
SO Newport	SO	2	2	2	2	2			1/4" Veneer	3 3/8	1 pc
SO Newport Plus	SO	4	4	4	4	3			1/2" Solid Flat	3 3/8	1 pc
SO Pinnacle	SO	1	1	1	1	1			1/4" Veneer	2 3/8	1 pc
SO Pinnacle Plus	SO	3	3	3	3	2			1/2" Solid Flat	2 3/8	1 pc
SO Portland	SO	2	2	2	2	2			1/4" Veneer	3 3/8	1 pc
SO Portland Plus	SO	4	4	4	4	3			1/2" Solid Flat	3 3/8	1 pc
SO Prescott	SO	4	4		4				Solid Raised	3 3/8	1 pc
SO Summit	SO	1	1		1	1			1/4" Veneer	2 3/8	1 pc
SO Summit Plus	SO	3	3		3	2			1/2" Solid Flat	2 3/8	1 pc
SO Taylor	SO	2	2		2				1/4" Veneer	3	1 pc
SO Taylor Plus	SO	4	4		4			7	1/2" Solid Flat	3	1 pc
SO Waterford	SO	3	3	3	3			7	Solid Raised	2 3/4	1 pc
SO Windsor	SO	2	2	2	2	1			Solid Raised	2 3/8	1 pc
SO Windsor Arch	SO	2	2	2	2	2			Solid Raised	2 3/8	

Finish Availability by Wood Species

- All door styles are not available in all wood species; see Door Style Summary for wood availability to determine finish options by door style
- Not all available colors are included in the ColorSelect chip set

Stain	Glaze	Upcharge	Alder Rustic Alder	Cherry Rustic Cherry	Hickory Rustic Hickory	Maple	Oak Rustic Oak	Quartersawn White Oak	Walnut Rustic Walnut
Biscotti		0			X			X	
Charcoal		10%	X	X			X	X	
Chili		0	X	X					
Chili	Chocolate	12%		X					
Chili	Accent Ebony	8%	X	X					
Chili	Ebony	12%	X	X					
Cider		0		X		X			
Cinnamon		0	X		X		X		
Dune		10%	X				X	X	X
Dune	Accent Ebony	18%	X				X		
Dune	Ebony	22%	X				X		
Espresso		10%	X	X		X	X		
Fawn		0%	X	X	X		X	X	
Fawn	Accent Ebony	8%	X	X	X		X	X	
Fawn	Ebony	12%	X	X	X		X	X	
Heather		10%	X	X			X		
Latte		0		X	X		X	X	
Mineral		0	X	X	X		X	X	X
Mineral	Accent Ebony	8%	X	X	X		X		
Mineral	Ebony	12%	X	X	X		X		
Mocha		0	X	X	X	X	X		
Mocha	Accent Chocolate	8%			X		X		
Mocha	Chocolate	12%			X		X		
Mocha	Accent Ebony	8%	X						
Mocha	Ebony	12%	X						
Natural *		0	X	X	X	X	X	X	X
Natural *	Accent Chocolate	8%	X		X				
Natural *	Chocolate	12%	X	X	X	X			
Natural *	Accent Ebony	8%							X
Natural *	Ebony	12%							X
Nutmeg		0	X		X	X	X		
Nutmeg	Accent Chocolate	8%	X			X			
Nutmeg	Chocolate	12%	X			X			
Nutmeg	Accent Ebony	8%	X						
Nutmeg	Ebony	12%	X						
Pewter		10%	X	X	X	X	X	X	X
Pewter	Accent Ebony	18%	X	X		X		X	
Pewter	Ebony	22%	X	X	X	X		X	
Sable		10%	X	X	X	X	X		
Saddle		0	X	X	X		X	X	
Saddle	Accent Ebony	8%	X	X	X				
Sienna		0	X	X	X		X		X
Sienna	Accent Chocolate	8%	X				X		
Sienna	Chocolate	12%	X				X		
Sienna	Accent Ebony	8%	X	X					
Sienna	Ebony	12%	X	X					

Continued on next page

Finish Availability by Wood Species

- All door styles are not available in all wood species; see Door Style Summary for wood availability to determine finish options by door style
- Not all available colors are included in the ColorSelect chip set

Stain	Glaze	Upcharge	Alder Rustic Alder	Cherry Rustic Cherry	Hickory Rustic Hickory	Maple	Oak Rustic Oak	Quartersawn White Oak	Walnut Rustic Walnut
Spice		0	X	X	X		X		X
Spice	Accent Ebony	8%	X	X					X
Spice	Ebony	12%	X	X	X				X
Toast		0	X	X		X			
Toast	Accent Chocolate	8%	X						
Weathered		10%	X		X		X	X	X
Weathered	Accent Ebony	18%	X				X	X	X
Weathered	Ebony	22%	X		X		X	X	X
Winter		0%	X		X	X	X	X	
Unfinished		0	X	X	X	X	X		X

Reclaimed Patina

Reclaimed Patina	25%	X		X		X		
Reclaimed Patina Color Program	30%	X		X		X		

- Standard Opaques are available on HDF, Maple, Rustic Alder, Oak, and Rustic Oak
- Feather Glaze is available on HDF & Maple only
- Opaque on Oak with a glaze is only available with an accent glaze

Standard Opaque	Unglazed	Accent Chocolate	Chocolate	Accent Graphite	Graphite	Feather Graphite
	12%	20%	24%	20%	24%	30%
Black	X					
Cadet	X					
Calypso	X					
Concrete	X			X	X	
Crème	X	X	X	X	X	X
Dove	X					
Forest	X					
Forge	X					
Harbor	X					
Ivory	X	X	X	X	X	X
Khaki	X	X	X	X	X	X
Lace	X	X	X	X	X	X
Navy	X					
Olive	X	X				
Onyx	X					
River Rock	X	X	X			
Silver Bay	X			X	X	
Steel	X					
White	X	X	X	X	X	X

Finishes

Finishes at a Glance

Stain		
---	Sprayed Stain	<i>Cider, Toast</i>
10%	Multi-Step Stain	<i>Charcoal, Dune, Espresso, Heather, Pewter, Sable, Weathered</i>
---	Hand-Wiped Stain	<i>All others</i>
Opaque Enamel		
12%	Standard Opaque	-----
12%	Custom Opaque	+ \$1100 sample and \$2600 set-up fee
Glaze		
8%	Accent Glaze	
12%	Flood Glaze	
18%	Feather Glaze	
Distressing		
10%	Timeworn	
10%	Antique	
15%	Heirloom	
Specialty		
25%	Reclaimed Patina	
30%	Reclaimed Patina Color Program	
5%	Non-Standard	
---	Unfinished	

Stain

- **Sprayed Stain (+0%)** Cider, Toast
- **Multi-Step Stain (+10%)** Charcoal, Dune, Espresso, Heather, Pewter, Sable, Weathered
- **Hand-Wiped Stain (+0%)** All others

We use three stain options to achieve the highest quality color and coverage. Hand-wiped stains enhance the grain of the wood and create a deep, rich color. Sprayed stains are sprayed on and not hand-wiped. This process is chosen to achieve a more consistent look on tight-grained woods like Maple. Multi-step stains are designed to show some underlying wood grain thru the pigmented color. With darker stain colors, the end grain of wood may have a slightly darker appearance. As every tree is unique, there will be much greater variation in both color and the amount of wood grain showing from door to door. Some color variation is to be expected with all stains and is part of the look of natural wood products.

- ✓ **REQUIRED FORM:** Specialty Finish Agreement must be completed and submitted with Multi-Step Stain order.

Finishes

Opaque Enamel

Our opaque enamel finish is a catalyzed conversion enamel applied in a 7-step process to achieve a multi-layer and highly durable finish. We use an enamel finish as it is considered one of the hardest in the industry. After every coat of finish, components pass through a series of hand sanding processes that both refine and enrich the overall look and feel for a truly superior final product. If distressing or glaze is selected, components receive an additional clear finish coat.

All opaque finishes are available on HDF, Maple, Rustic Alder, Oak, and Rustic Oak. Maple opaque finish has a full-coverage, smooth texture. Rustic Alder opaque finish has slightly visible natural wood grain. Opaque finishes on Oak and Rustic Oak will not completely fill open grain areas resulting in visible natural wood grain. **NOTE: An opaque finish on rustic wood will obscure all but the most pronounced rustic characteristics.**

Changes in climate conditions cause all wood products to expand and contract. As a result, opaque finished solid wood doors will show finish breaks and/or seam lines on all solid wood joints and panels as the seasons change. This is the nature of opaque finished wood products and is not a defect in the factory finishing process. Opaque finishes are not recommended for use in high humidity environments. Customers must be educated on the normal characteristics of opaque wood finishes as they will not be considered as reasons for product replacement.

Construction of maple opaque doors will change as follows:

Door Style		Opaque	Opaque Rustic	Opaque Heirloom, Antique	Opaque Timeworn
1/4" Veneer Center Panel	Door Frame	Solid Wood	n/a	n/a	Solid Wood
	Center Panel	HDF			HDF
	Drawer Front	HDF			Solid Wood
Raised / Plus Center Panel	Door Frame	Solid Wood	Solid Wood	Solid Wood	Solid Wood
	Center Panel	HDF	Solid Wood	Solid Wood	HDF
	Drawer Front	HDF	Solid Wood	Solid Wood	Solid Wood
Solid Wood Slab	Door	HDF	Solid Wood	Solid Wood	Solid Wood
	Drawer Front	HDF	Solid Wood	Solid Wood	Solid Wood

Standard Opaque (+12%)

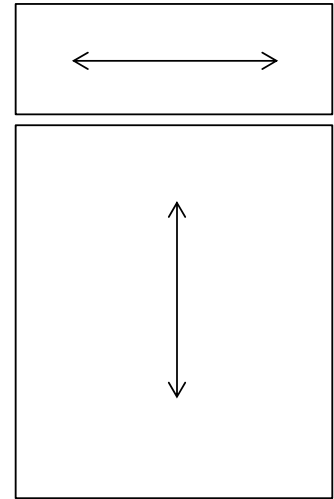
Woodland's Standard opaque colors have been specially chosen to coordinate with popular home interior trends.

- ✓ **REQUIRED FORM:** Specialty Finish Agreement must be completed and submitted with order.

Door Styles

CASCADE

	Alder	Cherry	Hickory	Maple	Oak	QSWO	Walnut
FO Cascade	3	3	3	3	2	7	7
SO Cascade	2	2	2	2	1		6



FO - Full Overlay

*To determine door / drawer width deduct 1/2" from cabinet width of full overlay single door cabinets

SO - Standard Overlay

*To determine door / drawer width deduct 2" from cabinet width of standard overlay single door cabinets

NOTES

- Door has vertical grain, drawer has horizontal grain
- Book matched grain alignment is not available
- Solid wood slab doors have horizontal stabilizers on door back
- **Not available in Opaque finishes; use Metro HDF for Opaque**

CONSTRUCTION

Drawer Front:	1 piece solid wood
Door Frame:	
Panel:	Solid wood slab door, 1/2" thick horizontal stabilizers on door back

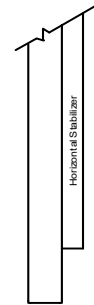
Center Panel	Inside Profile	Outside Profile
---	---	OSP1

Chart -- Door & Drawer Detail

Door/Drawer Width*	Stile Width	Rail Width	Center Panel Style
All sizes	---	---	Slab with OSP1

Chart -- 1 Pc. Drawer Detail

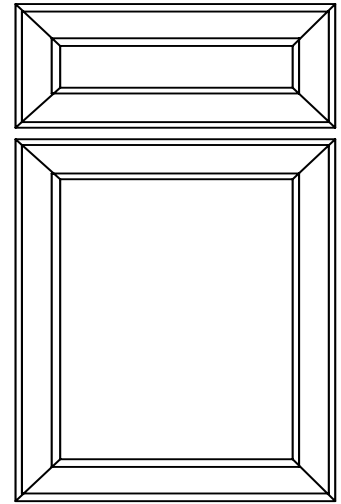
Drawer Height	Stile Width	Rail Width	Center Panel Style
All sizes	---	---	Slab with OSP1



Door Styles

CLASSIC

	Alder	Cherry	Hickory	Maple	Oak	Walnut
FO Classic	2	2		2		
FO Classic Plus	4	4		4		
SO Classic	1	1		1		
SO Classic Plus	3	3		3		
IN Classic	6	6		6		
IN Classic Plus	7	7		7		



FO - Full Overlay

*To determine door / drawer width deduct 1/2" from cabinet width of full overlay single door cabinets

SO - Standard Overlay

*To determine door / drawer width deduct 2" from cabinet width of standard overlay single door cabinets

IN - Inset

*To determine door / drawer width deduct 3 1/4" from cabinet width of inset single door cabinets.

NOTES

- Construction of maple doors and/or drawer fronts with opaque finish may change to HDF; see DF-8 for details
- Some doors may be constructed with narrower stile and rail widths and different center panels -- see chart below
- Some drawers may be constructed with narrower stile and rail widths and different center panels -- see chart below
- Raised Panel available -- see Heritage

FACE FRAME OPTIONS (INSET ONLY)

- Non-Beaded Face Frame (+0%)

CONSTRUCTION

Drawer Front:	5 piece solid wood reverse raised
Door Frame:	Mitered solid wood
Panel:	Available with either a 1/4" wood veneer or 1/2" solid wood reverse raised (Plus) center panel

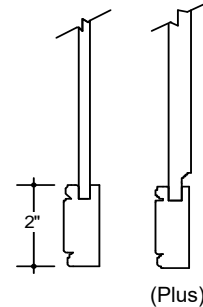
Center Panel	Inside Profile	Outside Profile
CP1 / CP2	ISPC	OSPC

Chart -- Door & Drawer Detail

Door/Drawer Width*	Stile Width	Rail Width	Center Panel Style
5" - Larger	2"	2"	CP1 / CP2
4 15/16" - Smaller	---	---	Slab with OSP1

Chart -- 5 Pc. Drawer Detail

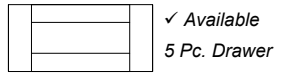
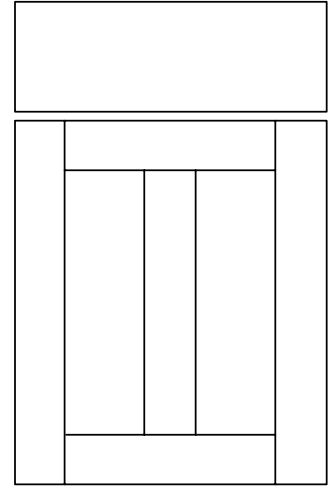
Drawer Height	Stile Width	Rail Width	Center Panel Style
5" - Larger	2"	2"	CP2
4 15/16" - Smaller	---	---	Slab with OSP1



Door Styles

HILL II

	Alder	Cherry	Hickory	Maple	Oak	Walnut
FO Hill II	3		3		2	
FO Hill II Plus	5		5		4	
Rustic FO Hill II Plus	4		4		4	



FO - Full Overlay

*To determine door / drawer width deduct 1/2" from cabinet width of full overlay single door cabinets

NOTES

- Five Piece Drawer Front Option - see Custom Options
- Rustic will have a 1/2" solid wood reverse raised (Plus) center panel
- Prep for Glass (GPREP) doors that are 10 1/8" Wide and greater have a center stile dividing center panel into two sections; requires two panes of glass; doors under 10 1/8" Wide will not -- see chart below
- Some doors may be constructed with narrower stile widths and different center panels -- see chart below
- Some 5-piece drawers may be constructed with narrower rail widths and different center panels -- see chart below

CONSTRUCTION

Drawer Front:	1 piece solid wood
Door Frame:	Mortise and Tenon solid wood
Panel:	Available with either a 1/4" wood veneer or 1/2" solid wood reverse raised (Plus) center panel

Center Panel	Inside Profile	Outside Profile
CP1 / CP2	ISP1	OSP1

Chart -- Door & Drawer Detail

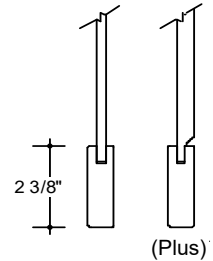
Door/Drawer Width*	Stile Width	Rail Width	Center Panel Style
10 1/8" - Larger	2 3/8"	2 3/8"	CP1 / CP2; Center stile 2 3/8"
10 1/16" - 7"	2 3/8"	2 3/8"	CP1 / CP2; No center stile
6 15/16" - 5 3/4"	1 3/4"	2 3/8"	CP1 / CP2; No center stile
5 11/16" - Smaller	---	---	Slab with OSP1

Chart -- 1 Pc. Drawer Detail

Drawer Height	Stile Width	Rail Width	Center Panel Style
All sizes	---	---	Slab with OSP1

Chart -- 5 Pc. Drawer Detail

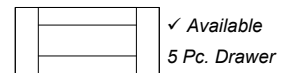
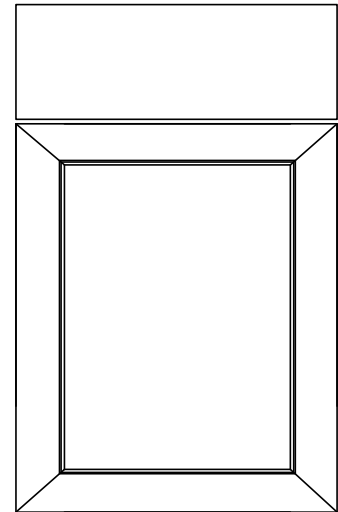
Drawer Height	Stile Width	Rail Width	Center Panel Style
7 9/16" - Larger	2 3/8"	2 3/8"	CP2
7 1/2" - 5"	2 3/8"	1 3/4"	CP2
4 15/16" - Smaller	---	---	Slab with OSP1



Door Styles

INGLEWOOD

	Alder	Cherry	Hickory	Maple	Oak	Walnut
FO Inglewood	2	2		2		
FO Inglewood Plus	4	4		4		
SO Inglewood	1	1		1		
SO Inglewood Plus	3	3		3		
IN Inglewood	6	6		6		
IN Inglewood Plus	7	7		7		



FO - Full Overlay

*To determine door / drawer width deduct 1/2" from cabinet width of full overlay single door cabinets

SO - Standard Overlay

*To determine door / drawer width deduct 2" from cabinet width of standard overlay single door cabinets

IN - Inset

*To determine door / drawer width deduct 3 1/4" from cabinet width of inset single door cabinets.

NOTES

- Five Piece Drawer Front Option - see Custom Options
- Construction of maple doors and/or drawer fronts with opaque finish may change to HDF; see DF-8 for details
- Some doors may be constructed with narrower stile widths and different center panels -- see chart below
- Some 5-piece drawers may be constructed with narrower rail widths and different center panels -- see chart below

FACE FRAME OPTIONS (INSET ONLY)

- Non-Beaded Face Frame (+0%)
- Beaded Face Frame available in Cherry, Maple & Walnut (+10%)

CONSTRUCTION

Drawer Front:	1 piece solid wood
Door Frame:	Mitered solid wood
Panel:	Available with either a 1/4" wood veneer or 1/2" solid wood reverse raised (Plus) center panel

Center Panel	Inside Profile	Outside Profile
CP1 / CP2	ISPF	OSPF

Chart -- Door & Drawer Detail

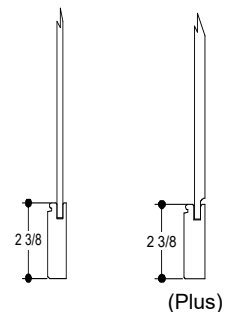
Door/Drawer Width*	Stile Width	Rail Width	Center Panel Style
7" - Larger	2 3/8"	2 3/8"	CP1 / CP2
6 15/16" - 5 3/4"	2 3/8"	2 3/8"	CP1 / CP2
5 11/16" - Smaller	---	---	Slab with OSP1

Chart -- 1 Pc. Drawer Detail

Drawer Height	Stile Width	Rail Width	Center Panel Style
All sizes	---	---	Slab with OSP1

Chart -- 5 Pc. Drawer Detail

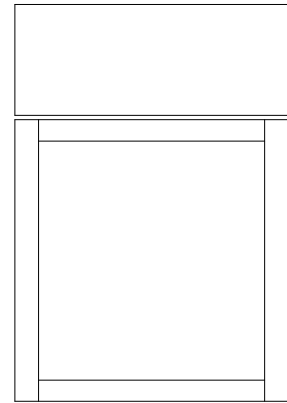
Drawer Height	Stile Width	Rail Width	Center Panel Style
7 9/16" - Larger	2"	2"	CP2
7 1/2" - 5 1/4"	2"	2"	CP2
5 3/16" - Smaller	---	---	Slab with OSP1



Door Styles

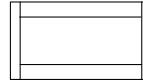
PLUSLINE

	Alder	Cherry	Hickory	Maple	Oak	QSWO	Walnut
FO PlusLine	6			6	5	7+5%	7+5%



FO - Full Overlay

*To determine door / drawer width deduct 1/2" from cabinet width of full overlay single door cabinets



✓ Available
5 Pc. Drawer

NOTES

- Construction of maple doors and/or drawer fronts with opaque finish may change to HDF; see DF-8 for details
- Opaque available on Maple and Oak
- Five Piece Drawer Front Option - see Custom Options
- Some doors/5-piece drawers may be constructed with narrower stile widths and different center panels -- see chart below
- Distressing not available
- Integrated Ends are not available
- Wainscot panels are only available in the Door and Face Frame style (Wainscot DFF)
- Prep for glass will change stile and rail; will be constructed to resemble Hill or see Aluminum doors in Custom Options
- No profile changes
- Mullions not available

CONSTRUCTION

Drawer Front:	1-piece Solid Wood
Door Frame:	Mortise and Tenon solid wood
Panel:	1/2" solid wood reverse raised (Plus) center panel

Center Panel	Inside Profile	Outside Profile
CP2	ISP1	OSP1

Chart -- Door & Drawer Detail

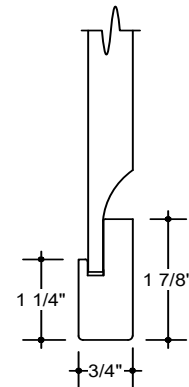
Door/Drawer Width*	Stile Width	Rail Width	Center Panel Style
7 5/8" - Larger	1 1/4"	1 1/4"	CP2
7 9/16" - 5"	1 1/4"	1 1/4"	CP2
4 15/16" - Smaller	---	---	Slab with OSP1

Chart -- 1 Pc. Drawer Detail

Drawer Height	Stile Width	Rail Width	Center Panel Style
All sizes	---	---	Slab with OSP1

Chart -- 5 Pc. Drawer Detail

Drawer Height	Stile Width	Rail Width	Center Panel Style
7 9/16" - Larger	1 1/4"	1 1/4"	CP2
7 1/2" - 5"	1 1/4"	1 1/4"	CP2
4 15/16" - Smaller	---	---	Slab with OSP1



Custom Options

IN = INSET Available

Glass, Metal & Resin Inserts for Aluminum and Wood Doors

	Clear Glass	Satin Glass	Pattern / Mirror Glass**	Back Painted Gloss* / Metallics	Back Painted Matte*	3form Resin
Inserts						
<i>0 - 4 sq. ft.</i>	260	262	698	904	1188	1708
<i>4.01 - 6 sq. ft.</i>	352	652	1008	1312	1738	2516
<i>6.01 - 8 sq. ft.</i>	442	842	1318	1720	2288	3322
<i>8.01 - 10 sq. ft.</i>	532	1032	1626	2130	2840	4130

*Aluminum doors AF006 and AF010 only available in Back Painted Gloss or Back Painted Matte; not available in Metallics

**Add \$1070 List per order on Mirror Glass; Additional packaging cost

- Specify insert name, door style, and cabinet.

Example:

- Aluminum Door Insert Order - Reeded Vertical Glass/FAALUMDRAF002 for WTUH3018
- Wood Door Insert Order - Reeded Vertical Glass for WTUH3018

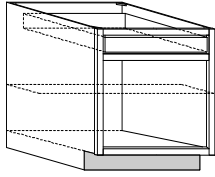
- Price is for insert only, per door; determined by overall square foot size of door
- Glass inserts are 5/32" thick
- All glass is tempered safety glass without a tempered logo, except mirror glass comes with safety backer
- Etched and patterned side facing in
- All back painted glass has a light grey backer for added durability
- Glass can be ordered separately.
 - Crating charge applies for glass 48" or larger, ordered without an aluminum door frame; Email customer service for quote.
 - Crating charge also applies to all mirrored glass regardless of size; Email customer service for quote.
- Handle holes cannot be drilled through glass in the field; Handles are not included
- **Add \$70 List per Door for drilling hardware; specify location on order**
- Handles are not included
- **Glass, Metal and Resin Insert options:**
 - **Clear Glass**
 - **Satin Glass**
 - **Pattern / Mirror glass: Reeded Vertical, Listrl D, and Mirror**
 - **Back Painted Gloss & Metallics: White Gloss, Black Gloss and Brushed Stainless Laminate**
 - Brushed Stainless laminate, vertical grain is standard; specify horizontal grain on order
 - **Back Painted Matte: White Matte**
 - **3form Resin: Quattro Carbon, and Wisp Silver**

Custom Options

IN = INSET Available

Omit Doors

IN

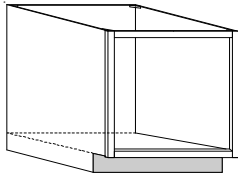


- No doors
- Drawers, drawer fronts and interior shelves remain

	Charge
OMITDOORS	20% Deduct

Box Only

IN

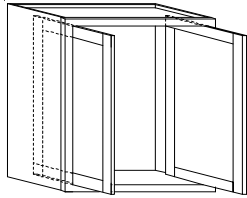


- Box only
- No drawer box, hardware, doors, drawer fronts, or shelves.
- Cabinet sides are drilled for holes unless specified, **specify NH for no shelf holes**

	Charge
BXONLY	30% Deduct

Pocket Door

IN

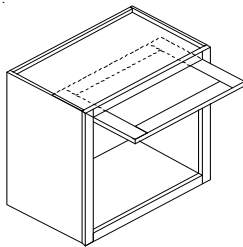


- Minimum cabinet depth 14"
- Pocket doors retract into cabinet
- Useable interior width is 7" less than overall cabinet width
- Maximum door travel into the cabinet is 6" less than cabinet depth
- No center stile
- Hardware required
- Design Tip: To conceal interior hardware or add supports for shelves see Custom Options for Fixed Vertical Divider. Useable interior width with FVD is 8 1/2" less than overall cabinet width
- See this Custom Options for Drill for Shelf Holes
- Woodline door not available

Price is per pair	Charge
PKD	1586

Lift Up Pocket Door

IN



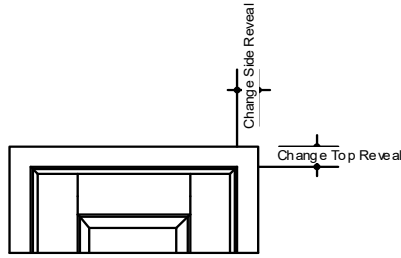
- Cabinets over 24" Wide will have a single lift up door with horizontal grain; Arch not available
- Minimum cabinet depth 14"
- Pocket door retracts into cabinet
- Pocket door reduces opening size by 2" on top
- Maximum door travel into the cabinet is 6" less than cabinet depth
- No center stile
- Hardware required

Price is per door	Charge
LUPKD	1220

Custom Options

IN = INSET Available

Change Door / Drawer Reveal



Price is per cabinet

Charge

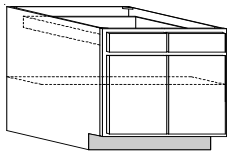
REVEAL

15%

- Specify reveals on order
- Only door and/or drawer front sizes can be increased or decreased
- Face frames do not change

Split Top Drawer

IN



Price is per cabinet

Charge

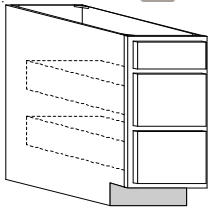
STD

25%

- Top drawer only (Example: 3DB36STD - top full width drawer split to two drawers, middle and bottom drawer remain full width)

False Drawer Front

IN



False top drawer shown

Price is per drawer front

Charge

FDWRF

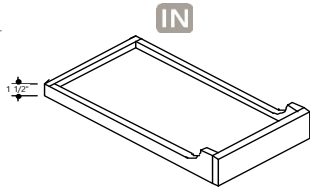
100 Deduct

- Will always make the top drawer false unless noted on order
- False drawer front is factory installed
- 20/20 Users: Change drawer count on item so false drawer will not be included in total drawer count

Custom Options

IN = INSET Available

Scooped Drawer



Price is per drawer

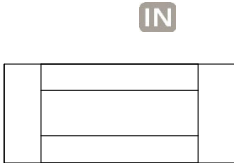
Charge

Scooped Drawer

400

- Drawer box sides and back are reduced to be 1 1/2" H
- Price includes upgrading scooped drawer only to 5/8" solid maple drawer box construction
- Clearance from top of cabinet to front of scooped drawer box: 1 3/4"
- Clearance from top of cabinet to back of scooped drawer box: 3"
- Clearance from top of cabinet to standard drawer box: 1 3/4"

Five Piece Drawer Front



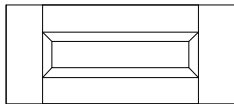
Price is per drawer front

Charge

FIVEPIECEDF

144

- Five Piece Drawer Front option must be applied to all drawers on the same order
- Minimum drawer front height varies by door style; see Door & Drawer Detail Chart for door of choice
- Not available in drawer heights less than 5" Tall
- 20-20 Users: 20-20 does not count false drawer fronts; manually adjust the five piece drawer count to include false drawer fronts



- **Flat Panel Door Styles:** All drawer fronts will have a flat panel (reversed raised)

- **Raised Panel Door Styles:**

Standard Base - Top drawer front has a flat panel (reverse raised)

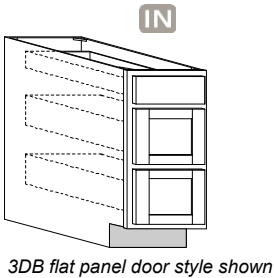
Two Drawer Base (2DB) - Both drawer fronts have a raised panel

Three Drawer Base (3DB) - Top drawer front has a flat panel (reverse raised); middle and bottom drawer fronts have a raised panel

Four Drawer Base (4DB) - Top three drawer fronts have a flat panel (reverse raised); bottom drawer front has a raised panel

- Not available in Cascade and Metro HDF

1 Pc. / 5 Pc. Combination Drawer Front



3DB flat panel door style shown

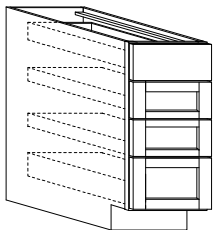
Price is per modified drawer front

Charge

COMBODF

250

- Combination Drawer Front option must be applied to all drawers on the same order
- Standard Base - drawer front is 1 Pc.
- Two Drawer Base - both drawer fronts are 5 Pc.
- Three Drawer Base - top drawer front is 1 Pc.; middle and bottom are 5 Pc.
- Four Drawer Base - top drawer front is 1 Pc.; bottom three are 5 Pc.
- Minimum drawer front height for 5 Pc. is 5 1/2"
- For door style availability see Five Piece Drawer Front section



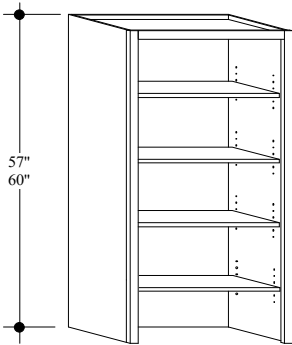
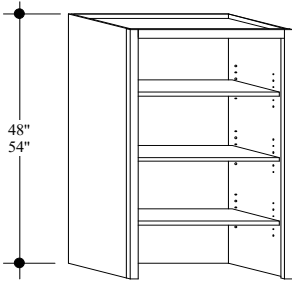
4DB flat panel door style shown

Furniture Cabinets

IN = INSET Available
BD = Butt Doors

5085 Desktop Bookcase Cabinet, 12" Deep

IN



	Charge
DBC1848	1590
DBC2148	1674
DBC2448	1762
DBC3048	2028
DBC3648	2290

DBC1854	1666
DBC2154	1754
DBC2454	1848
DBC3054	2124
DBC3654	2396

DBC1857	1886
DBC2157	1984
DBC2457	2090
DBC3057	2392
DBC3657	2702

DBC1860	1886
DBC2160	1984
DBC2460	2090
DBC3060	2392
DBC3660	2702

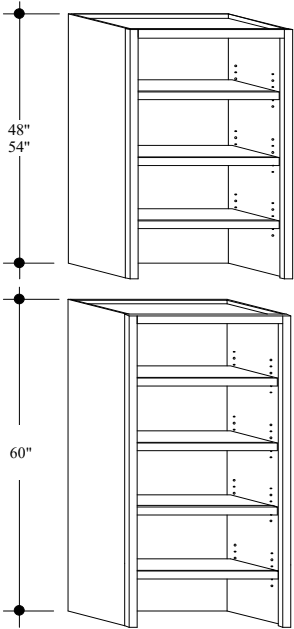
- Ends are plywood with natural maple EasyClean; see Custom Options for finished end upgrades
- Species veneer interior finished to match cabinet face
- Shelves are 3/4" species veneer with wood veneer edge band finished to match cabinet face
- 48" and 54" High have three full depth adjustable shelves
- 57" and 60" High has four full depth adjustable shelves
- **Inset:** 13" Deep
- See Custom Options for Interior Furniture Shelf

Furniture Cabinets

IN = INSET Available
BD = Butt Doors

5090 Desktop Bookcase Cabinet with Furniture Shelves, 12" Deep

IN



		Charge
DBC3748 - DBC4248	37-42" Wide	3054
DBC4348 - DBC4848	43-48" Wide	3442
DBC3754 - DBC4254	37-42" Wide	3130
DBC4354 - DBC4854	43-48" Wide	3520
DBC3760 - DBC4260	37-42" Wide	3322
DBC4360 - DBC4860	43-48" Wide	3710

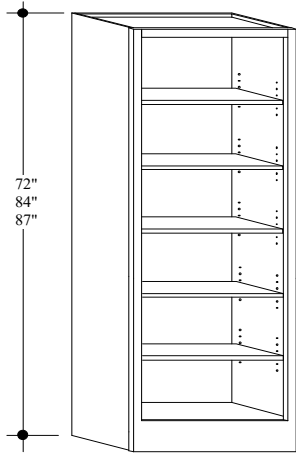
- **Specify width dimension on order; must be ordered in 1/4" increments** (Example: DBC39.2548SQ)
- Ends are plywood with natural maple EasyClean; see Custom Options for finished end upgrades
- Species veneer interior finished to match cabinet face
- Furniture shelves are 3/4" species veneer finished to match cabinet face and have a **1 1/2" solid wood molding front; Specify molding profile on order - OJ, Square (SQ) or Beveled (BV)**
- 48" and 54" High have three full depth adjustable shelves
- 60" High has four full depth adjustable shelves
- **Inset: 13" Deep**
- See Custom Options for Interior Furniture Shelf

Furniture Cabinets

IN = INSET Available
BD = Butt Doors

5095 Open Bookcase Cabinet 72", 84" and 87" High, 12" Deep

IN



	Charge
BC187212	2612
BC217212	2718
BC247212	2818
BC277212	3082
BC307212	3280
BC337212	3476
BC367212	3670

BC188412	2694
BC218412	2788
BC248412	2936
BC278412	3180
BC308412	3366
BC338412	3586
BC368412	3790

BC188712	2826
BC218712	2944
BC248712	3066
BC278712	3306
BC308712	3494
BC338712	3728
BC368712	3922

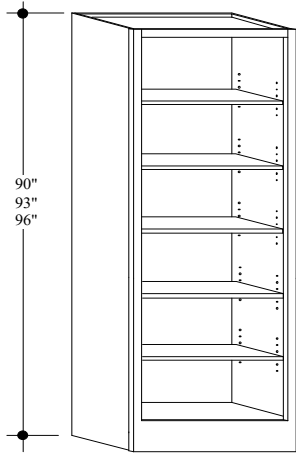
- Ends are plywood with natural maple EasyClean; see Custom Options for finished end upgrades
- Species veneer interior finished to match cabinet face
- Shelves are 3/4" species veneer with wood veneer edge band finished to match cabinet face
- 72" High has four full depth adjustable shelves
- 84" and 87" High have five full depth adjustable shelves
- **Inset: 12" Deep**
- Flush toe kick
- Verify ceiling height to tip cabinet up
- See Custom Options for Interior Furniture Shelf upgrade, & Top and Bottom Valance Rails

Furniture Cabinets

IN = INSET Available
BD = Butt Doors

5100 Open Bookcase Cabinet 90", 93" and 96" High, 12" Deep

IN



	Charge
BC189012	2826
BC219012	2944
BC249012	3066
BC279012	3306
BC309012	3494
BC339012	3728
BC369012	3922

BC189312	2980
BC219312	3096
BC249312	3224
BC279312	3454
BC309312	3656
BC339312	3896
BC369312	4080

BC189612	2980
BC219612	3096
BC249612	3224
BC279612	3454
BC309612	3656
BC339612	3896
BC369612	4080

- Ends are plywood with natural maple EasyClean; see Custom Options for finished end upgrades
- Species veneer interior finished to match cabinet face
- Shelves are 3/4" species veneer with wood veneer edge band finished to match cabinet face
- 90", 93" and 96" High have six full depth adjustable shelves

- Inset: 12" Deep

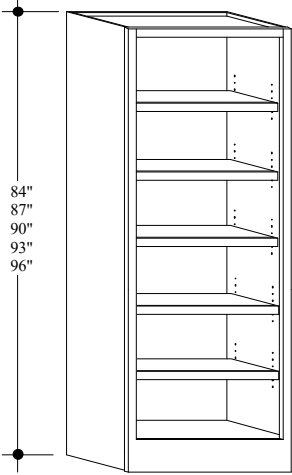
- Flush toe kick
- Verify ceiling height to tip cabinet up
- See Custom Options for Interior Furniture Shelf upgrade & Top and Bottom Valance Rails

Furniture Cabinets

IN = INSET Available
BD = Butt Doors

5105 Open Bookcase Cabinet with Furniture Shelves, 12" Deep

IN



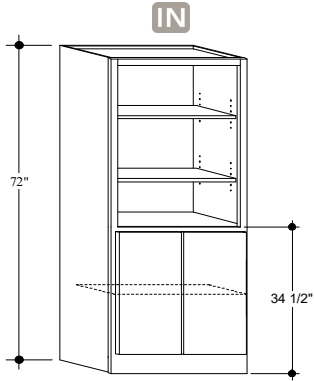
		Charge
BC378412 - BC428412	<i>37-42" Wide</i>	4824
BC438412 - BC488412	<i>43-48" Wide</i>	5356
BC378712 - BC428712	<i>37-42" Wide</i>	5016
BC438712 - BC488712	<i>43-48" Wide</i>	5568
BC379012 - BC429012	<i>37-42" Wide</i>	5016
BC439012 - BC489012	<i>43-48" Wide</i>	5568
BC379312 - BC429312	<i>37-42" Wide</i>	5216
BC439312 - BC489312	<i>43-48" Wide</i>	5790
BC379612 - BC429612	<i>37-42" Wide</i>	5216
BC439612 - BC489612	<i>43-48" Wide</i>	5790

- Specify width dimension on order; must be ordered in 1" increments (Example: BC398412OJ)
- Ends are plywood with natural maple EasyClean; see Custom Options for finished end upgrades
- Species veneer interior finished to match cabinet face
- Furniture shelves are 3/4" species veneer finished to match cabinet face and have a **1 1/2" solid wood molding front; Specify molding profile on order - OJ, Square (SQ) or Beveled (BV)**
- 84" and 87" High have five full depth adjustable shelves
- 90", 93" and 96" High have six full depth adjustable shelves
- **Inset: 12" Deep**
- Flush toe kick
- Verify ceiling height to tip cabinet up
- See Custom Options for Top and Bottom Valance Rails

Furniture Cabinets

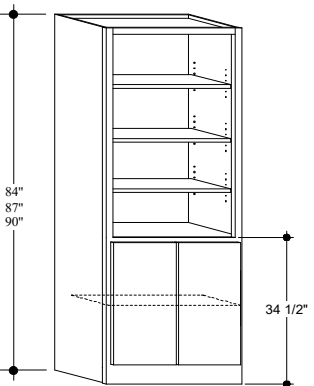
IN = INSET Available
BD = Butt Doors

5110 Bookcase One or Two Door Cabinet, 12" Deep



	0	1	2	3	4	5	6	7
BC1D187212	2852	2980	3109	3237	3380	3522	3679	3993
BC1D217212	2994	3129	3263	3398	3548	3698	3862	4192
BC2D247212BD	3150	3292	3434	3575	3733	3890	4064	4410
BC2D307212BD	3804	3975	4146	4318	4508	4698	4907	5326
BC2D367212BD	4526	4730	4933	5137	5363	5590	5839	6336

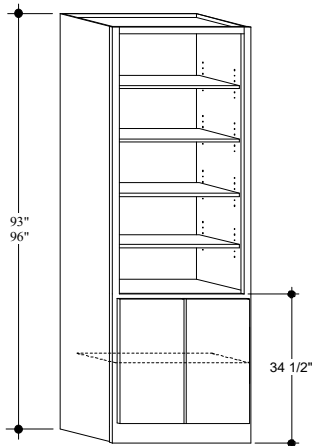
BC1D188412	2946	3079	3211	3344	3491	3638	3800	4124
BC1D218412	3094	3233	3372	3512	3666	3821	3991	4332
BC2D248412BD	3256	3403	3549	3696	3858	4021	4200	4558
BC2D308412BD	3940	4117	4295	4472	4669	4866	5083	5516
BC2D368412BD	4694	4905	5116	5328	5562	5797	6055	6572



BC1D188712	3116	3256	3396	3537	3692	3848	4020	4362
BC1D218712	3276	3423	3571	3718	3882	4046	4226	4586
BC2D248712BD	3446	3601	3756	3911	4084	4256	4445	4824
BC2D308712BD	4166	4353	4541	4728	4937	5145	5374	5832
BC2D368712BD	4970	5194	5417	5641	5889	6138	6411	6958

BC1D189012	3116	3256	3396	3537	3692	3848	4020	4362
BC1D219012	3276	3423	3571	3718	3882	4046	4226	4586
BC2D249012BD	3446	3601	3756	3911	4084	4256	4445	4824
BC2D309012BD	4166	4353	4541	4728	4937	5145	5374	5832
BC2D369012BD	4970	5194	5417	5641	5889	6138	6411	6958

BC1D189312	3286	3434	3582	3730	3894	4058	4239	4600
BC1D219312	3454	3609	3765	3920	4093	4266	4456	4836
BC2D249312BD	3638	3802	3965	4129	4311	4493	4693	5093
BC2D309312BD	4390	4588	4785	4983	5202	5422	5663	6146
BC2D369312BD	5248	5484	5720	5956	6219	6481	6770	7347



BC1D189612	3286	3434	3582	3730	3894	4058	4239	4600
BC1D219612	3454	3609	3765	3920	4093	4266	4456	4836
BC2D249612BD	3638	3802	3965	4129	4311	4493	4693	5093
BC2D309612BD	4390	4588	4785	4983	5202	5422	5663	6146
BC2D369612BD	5248	5484	5720	5956	6219	6481	6770	7347

- Single door cabinets specify right or left hinge on order
- Ends are plywood with natural maple EasyClean; see Custom Options for finished end upgrades
- Bookcase and base section have species veneer interior finished to match cabinet face
- 72" High has three full depth adjustable shelves
- 84", 87" and 90" High have four full depth adjustable shelves
- 93" and 96" High have five full depth adjustable shelves
- Shelves are 3/4" species veneer with wood veneer edge band finished to match cabinet face
- **Inset: 12" Deep**
- Flush toe kick
- Bottom cabinet height lines up with a standard base cabinet
- Verify ceiling height to tip cabinet up
- See Custom Options for Interior Furniture Shelf upgrade & Top and Bottom Valance Rails

Accessories are installed at no additional charge if ordered as part of a cabinetry order. *Exceptions as noted.*

8005 Interior EasyClean Shelves

IN



E-Board	12" Deep
MSH1224E	114
MSH1236E	168
MSH1242E	198
MSH1248E	226

Plywood	12" Deep
MSH1224PLY	166
MSH1236PLY	246
MSH1242PLY	302
MSH1248PLY	382

E-Board	24" Deep
MSH2424E	168
MSH2436E	252
MSH2442E	294
MSH2448E	336

Plywood	24" Deep
MSH2424PLY	356
MSH2436PLY	408
MSH2442PLY	502
MSH2448PLY	648

- Price is per shelf
- Available with E-Board or Plywood core
- Shelves are 3/4" thick with natural maple EasyClean surface and 1mm PVC shelf banding on front edge
- Cut down shelf on site
- Shelf clips not included
- For custom sizes see Custom Size Interior Shelves

8007 Interior Finished Wood Veneer Shelves

IN



E-Board	12" Deep
WSH1236E	250
WSH1248E	330

Plywood	12" Deep
WSH1236PLY	348
WSH1248PLY	464

E-Board	24" Deep
WSH2436E	400
WSH2448E	530

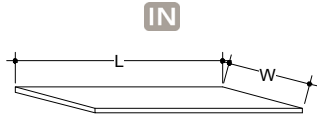
Plywood	24" Deep
WSH2436PLY	612
WSH2448PLY	816

- Price is per shelf
- Available with E-Board or Plywood core
- **Specify wood species and finish on order**
- Shelves are 3/4" thick with species veneer and edge band on front edge
- **For species veneer edge band on additional edges, add EB to catalog number, add \$28 list per lineal foot, and specify edge(s) on order**
- Shelf clips not included
- For custom sizes see Custom Size Interior Shelves

Accessories

IN = INSET Available

8010 Custom Size Interior Shelves

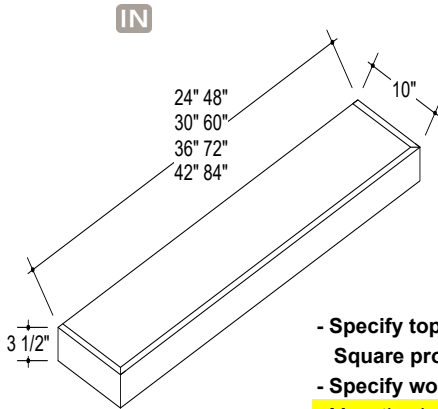


E- Board		Charge
CSMSHE	EasyClean	60
CSWSHE	Wood Veneer	98

Plywood		Charge
CSMSHPLY	EasyClean	90
CSWSHPLY	Wood Veneer	116

- Price is per square foot
- **Specify shelf size and which edge to be edge banded**
- Available with E-Board or Plywood core
- EasyClean Shelves: 3/4" thick with natural maple EasyClean surface and 1mm PVC shelf banding on front edge
- Wood Veneer Shelves: 3/4" thick with species veneer and edge band on front edge; **specify wood species and finish on order**
 - **For species veneer edge band on additional edges, add EB to catalog number, add \$28 list per lineal foot, and specify edge(s) on order**
- Maximum size is 96" Wide x 48" Deep
- Shelf clips not included

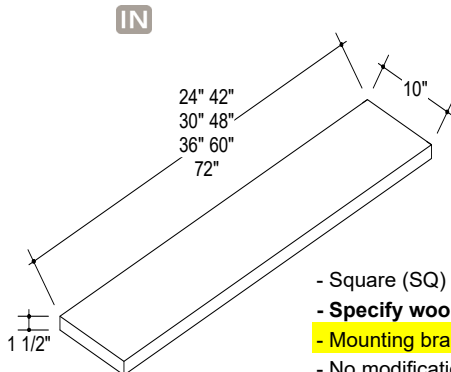
8015 Floating Shelves



Price is per shelf		Charge
FLSH1024	10" Deep	922
FLSH1030	10" Deep	1004
FLSH1036	10" Deep	1096
FLSH1042	10" Deep	1284
FLSH1048	10" Deep	1466
FLSH1060	10" Deep	1834
FLSH1072	10" Deep	2200
FLSH1084	10" Deep	2566

- **Specify top edge molding profile on order - OJ, Square (SQ) or Beveled (BV); all other edges have Square profile** (Example: FLSH0648BV)
- **Specify wood species and finish on order**
- Mounting bracket included; bracket must be attached to wall studs
- 3 1/2" is the maximum height for supplied mounting bracket; for heights greater than 3 1/2" submit custom quote. Custom sizes may require purchasing a mounting bracket to support shelf.
- Maximum weight capacity: 35 lbs.

8017 Floating Shelves, 1 1/2" High



Price is per shelf		Charge
FLSH1.51024	10" Deep	646
FLSH1.51030	10" Deep	702
FLSH1.51036	10" Deep	732
FLSH1.51042	10" Deep	824
FLSH1.51048	10" Deep	904
FLSH1.51060	10" Deep	1160
FLSH1.51072	10" Deep	1282

- Square (SQ) profile only
- **Specify wood species and finish on order**
- Mounting bracket included; bracket must be attached to wall studs
- No modifications
- Can be trimmed up to 2" off each end on-site, except for 24" shelf.
 - 24" is the minimum length for included mounting bracket; for lengths less than 24", bracket must be constructed on-site. Custom sizes may require purchasing a mounting bracket to support shelf.
- Shelf height can vary slightly; shelves are not designed to be butted together
- Maximum weight capacity: 35 lbs.

Accessories

IN = INSET Available

8170 Finish & Touch Up Kit

* All finishes are designed to be factory applied. On site application and conditions may result in color variations.
Woodland does not guarantee exact color matching when applied on site.

		CATALOG#	Charge
Stain Group A *	Stain A - Pint	STNAPNT	96
	<i>Specify color</i>		

Stain Group A - Wipe Application

- When applied on-site, must be wiped on
- Colors: Biscotti, Chili, Cinnamon, Latte, Mineral, Mocha, Nutmeg, Saddle, Sienna, Spice, Winter

Stain Group C *	Stain C - Kit	STNCPNT	194
-----------------	---------------	---------	-----

Stain Group C - Multi-Step Application

- When applied on-site, must apply both a spray coat and a wipe coat; one pint of each included
- Colors: Charcoal, Cider, Dune, Espresso, Fawn, Heather, Pewter, Sable, Toast, Weathered

Opaque Enamel * Δ	Opaque Enamel - Pint	WPNTPNT	148
	Enamel Primer - Pint	PRMPNT	110

Δ **Opaque Enamel** - Requires both a primer coat and top coat; **each sold separately**

Glaze *	Glaze - Half Pint	GLZHALFPNT	108
	Glaze - Pint	GLZPNT	174

Touch Up Kit	Touch Up Kit	TOUCHUP	126
	<i>Stain & Standard Opaque Kit includes fill stick, stain/opaque pen and bottle of clear top coat</i>		
	<i>Custom Opaque Kit includes bottle of opaque colored top coat</i>		
	Aerosal Touch Up Kit - Stain	STPINT	280
	<i>Specify wood species and finish(es)</i>		
<i>Includes 1 pint of stain, clear top coat & top coat catalyst with spray applicator (catalyst has 6 hour shelf life)</i>			
Aerosal Touch Up Kit - Opaque	PAPINT	240	
<i>Specify wood species and finish(es)</i>			
<i>Includes 1 pint of paint with spray applicator; no top coat required</i>			



orders@woodlandcabinetry.com
phone: 605.698.4300

Order Date: _____

Customer PO#: _____

Sales Order (SO#): _____

Dealer Code: _____ **Inset Product Awareness Agreement** Page _____ of _____

Woodland Cabinetry wants you to be fully satisfied with your inset cabinetry. Inset cabinetry has some special characteristics and unique specifications that are different than full or standard overlay cabinetry. It is important to take note of these differences prior to purchase.

Please read the following descriptions. After all your questions about your inset cabinetry have been answered please initial all lines and sign the agreement below.

_____ **The difference between Inset and Standard/Full Overlay**

Standard and full overlay cabinetry is much more forgiving during installation and will stand up well to changes in climate through the years. This is because standard/full overlay doors and drawer fronts overlay the cabinet face frame which allows for a greater change in the cabinet's dimensions before affecting the cabinet's functionality. Inset cabinetry by its very nature does not allow for these types of changes and requires both careful installation and controlled environments.

_____ **Installation**

Racking occurs when cabinets are forced out of square by improper installation. To prevent racking, installers must compensate for out of square floors and walls with shims so inset cabinetry will function correctly. Woodland recommends using only experienced installers to install inset cabinetry jobs.

_____ **Environment - Storage and Installation**

Inset cabinetry does not react well to extreme changes in climate. Wood products will naturally expand and contract with changes in climate, which in turn can cause a cabinet's dimensions to change. This is the nature of wood products and cannot be avoided. It is imperative that inset cabinetry be stored and installed in locations where both temperature and humidity are controlled. If a customer lives in an area with extreme variations in interior temperatures and humidity, we do not recommend they select inset cabinetry.

Agreement

I have read and understand the above Inset descriptions and all characteristics have been explained to me. I understand that Inset cabinetry requires a controlled environment and careful installation. If racking occurs on my Inset cabinetry, I will not hold Woodland Cabinetry responsible if I have not met or maintained the requirements set forth in this agreement.

Customer Signature: _____ Date: _____

Dealer Signature: _____ Date: _____

Your order will not be processed until all required forms are signed and submitted.





orders@woodlandcabinetry.com
phone: 605.698.4300

SPECIAL NOTE:

Custom Color Opaque Enamel expires **120 days** after the door sample has shipped. If the customer wishes to place their cabinetry order after the expiration date, the customer will be required to place another request, a new door sample will be produced and all applicable fees will apply.

Dealer Code: _____ **Custom Color Request & Agreement** Page _____ of _____
**Custom Opaque Color or
Non-Standard Woodland Stain/Opaque/Glaze Combination**

Thank you for requesting a custom color from Woodland Cabinetry. We want you to be fully satisfied with the results and believe it's important to plan the process carefully and take all proper steps to ensure success.

1. To begin, review all program details and associated charges. Then complete the **Sample Request** section below and submit to Woodland to receive your door sample.
2. Once you approve the custom opaque color or non-standard combination and are ready to order, complete the **Order Agreement** section below. Submit this form, and any additional required forms, with your cabinetry order.

****Custom Opaque Samples Expire 120 Days after the door sample has shipped****

Sample Request

Order Date: _____
Sample PO #: _____

Dealer Name: _____

Dealer Address: _____

City: _____ State: _____ Zip: _____

Phone #: _____ Email: _____

Customer Job Name: _____

Sample Type: FFS Drawer Front CMDS15 Door Sample

Custom Opaque #: _____ Woodland Stain / Opaque: _____

Door Style: _____ Wood Specie: _____

Glaze/Distressing:* _____

** Custom color match is not available to match custom stains, custom glazes or any other custom specialty finishes. Only standard glazes and distressing can be applied to a custom opaque color.*

Order Agreement

Order Date: _____
Customer PO #: _____

I have seen the custom opaque color or non-standard combination sample provided by Woodland Cabinetry labeled with Sales Order (SO#): _____ and give my authorization to proceed with the cabinet order using the custom color. I understand that the sample is only a representation of what my cabinets will look like. I am aware that different wood grain patterns and characteristics may be present in my cabinets. Woodland Cabinetry cannot guarantee the exact match of your sample and we stress that you will see some color variation in the finished project after installation. Please be aware that all finished product will age and change with time and exposure to sun light.

If the sample meets your color expectations, please sign below and submit with your cabinetry order.

Customer Signature: _____ Date: _____

Dealer Signature: _____ Date: _____

Your order will not be processed until all required forms are signed and submitted.

